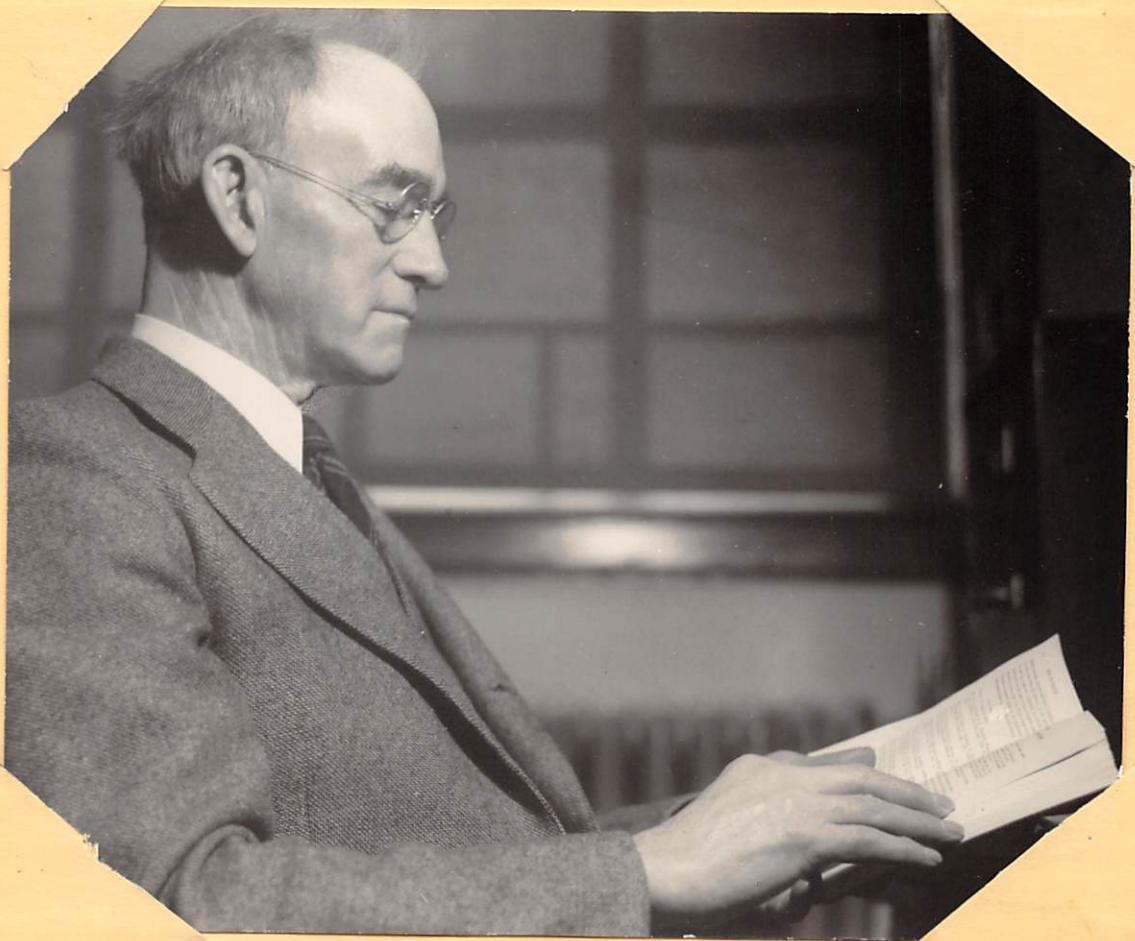


.....: WELLES, Winthrop Selden, 1875- Born of Maine and
 : Conn. stock on Illinois prairie farm, and lived there
 : until 22. ~~No high school within reach.~~ Educated: Ill.
 CUT : St. Normal Univ.; Univ. Ill., B.S., 1901; ~~XXXX~~ Harvard,
 : M.Ed., 1929. Teacher, rural, graded, and high schools;
 : Supt. Schools, suburban Chicago; and instructor and pro-
 fessor, State Normal School and College, 1898- In Wis.:
 Started and directed Sch. Ed'l Ag. for teacher training at River Falls
 State Normal School, 1912-1919; St. Sup. Voc Ag., 1917-1919; first to
 request every ag. teacher to try supervised practice in the form of
 father-and-son partnership projects, 1918-; author of "~~How to Teach~~
 Upper Grade Geography," adopted by Regents for all State Normal Schools,
 "~~The Use of Note Books in the Teaching of the Biological Sciences,~~"
 1910, "Class Projects for Ag. Students," 1916, and "Home Farm Partner-
 ship Agreement," a prescribed form of contract, with explanations, 1918.
 In Mass.: Prof. Ag. Ed. at Mass. Ag. Col. and Asst. Sup. Ag. Teacher
 Training in Mass. Dept. Ed., 1919- Head Dept. Ed. at Mass. St. Col.,
 1924- His philosophy: Projects are things to do that demand essential
 knowing, with the teacher standing by to stimulate and guide. Carried
 College courses, with M.S. degree credit, to many teachers, meeting
 them at schools, homes, railroad stations, and in cars by roadsides.
 His philosophy of learning for boys he himself applied in his provis-
 ion of learning for men, both in his College and in his itinerant
 training of teachers and apprentice-teachers. Open-minded. Sympathetic.
 Constructive. Warmly regarded. His motto: IT CAN BE DONE, SOMEHOW.
 -- R. W. Stimson.



Welles, W.S.