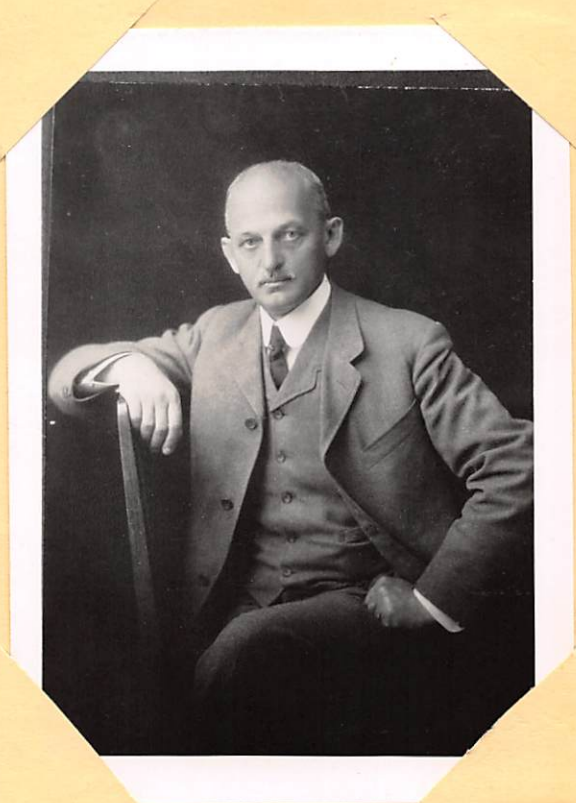


a gift from the General Education Board
in recognition of his work in the field of
education,

..... HANUS, Paul H., 1855-1941. Born in upper Silesia,
: Prussia. Came to Wisconsin as a small child. Grew up
: into a wholehearted American and a distinguished edu-
CUT : cator. Univ. Mich., B.S., 1878; LL.D., 1925. Univ. Col.,
: LL.D., 1906. Principal founder of Harvard Graduate School
: of Education; and himself secured the first half-million
..... of its initial two million dollars endowment fund. His
philosophy of education embraced this belief: "General culture is the
capacity to appreciate the resources and the problems of our civili-
zation and the power to deal effectively with some of them." Out-
standing participant in many movements for the improvement of education.
Chairman of the Mass. Commission on Industrial Education, which "started
the first public (italics his) schools for trades and agriculture in
the United States," 1906-1909; and on Mass. ~~XXXXXX~~ B'd Ed., which
took over the duties of the Commission, 1909-1919. Liked our "School
and Home Farm Cooperation" philosophy and its "Balanced Education"
program from its beginning in 1908, helped to implement it, and gave
it lifelong support. More than any other man, merits grateful re-
membrance as the founder of ~~xxxxxxxx~~ vocational education in the
public schools of the United States. Fuller details in his own words
may be read in his "Adventuring in Education," 259 pages, 1937, Harvard
University Press, Cambridge, Mass. -- R. W. Stimson.



[See notes on bas-relief and inscription
to face on folios above story.]

151
74a



PAUL H. HANUS
PROFESSOR OF EDUCATION
1891 - 1921
PRESENTED IN HONOR OF HIS SEVENTY-FIFTH BIRTHDAY
BY HIS FRIENDS, ASSOCIATES AND FORMER STUDENTS
TO THE HARVARD GRADUATE SCHOOL OF EDUCATION
WHICH HE WAS CHIEFLY INSTRUMENTAL IN ESTABLISHING

cupk

33/4-

Crop →

Smaller Cape → PAUL H. HANUS
PROFESSOR OF EDUCATION
1891-1921

PRESENTED IN HONOR OF HIS SEVENTY-FIFTH BIRTHDAY, MARCH 14, 1930
BY HIS FRIENDS, ASSOCIATES AND FORMER STUDENTS
TO THE HARVARD GRADUATE SCHOOL OF EDUCATION
WHICH HE WAS CHIEFLY INSTRUMENTAL IN ESTABLISHING

Smaller Cape.

*Set bas-relief and above inscription opposite
on after Hanus Story and smaller cut.*