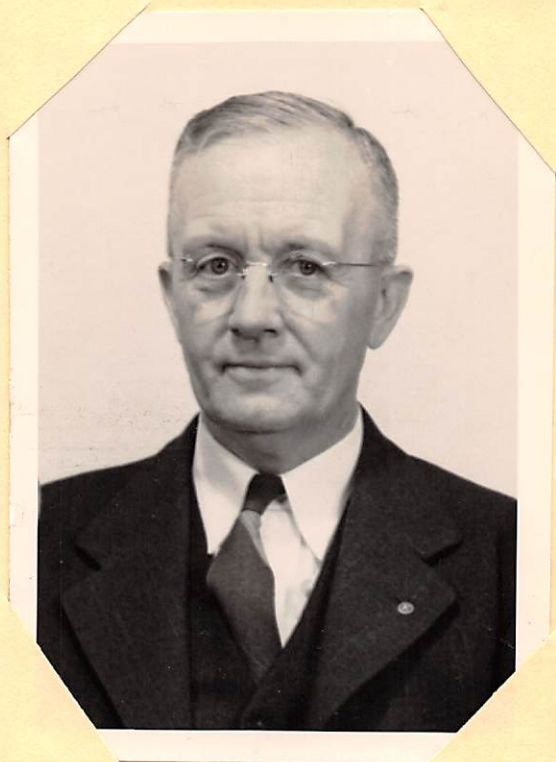


..... DAVIDSON, Allan Park, 1887- Born at Hampstead, Md.
 : Son of a farmer. B.S and M.S., Kansas State College
 : of Agriculture and Applied Science. Five years teacher
 : of ag. and director of 640-acre school farm in Nebraska
 : School of Agriculture, Curtis, Neb. Called to Kansas
 : State College in 1919 to organize the rehabilitation
 program in ag. ed. of less than college grade for men
 disabled in World War I.; and to assist in preparing teachers for work
 in the field of voc. ed. in ag. Active management since 1933 of three
 Kansas farms totaling more than 1,000 acres has been a big factor in
 keeping his directive influence sound and progressive. Executive Ad-
 viser , Kansas Assoc. F.F.A. Now in 1943 writing and editing the 15th
 volume of monthly issues of the Kansas Future Farmer Newsletter.
 Nationally known and appreciated since September, 1930, as the highly
 competent Book Review Editor of our mag. Agricultural Education.
 ** Harry E. Bradford.



Kansas

Davidson